

# Shower Doors



# SHOWER DOORS

## Basco Deluxe Framed 3/16-inch Glass Sliding Shower Door



Model number: 7150/DLXH05

The Deluxe framed sliding shower doors possess proven design and performance. The bypass unit includes two towel bars that attach to the panel framing. Anodized aluminum hardware helps prevent rusting or corrosion. The header comes with a safety T-lock that ensures the unit's stability.

- Standard widths: 4' & 5'
- Standard height 68"
- Traditionally shaped header
- Features interior and exterior through-the-rail dual towel bars.
- Bypass Panels: Both panels will slide in the enclosure.

### Glass Options:



Clear

Obscure

### Finish Options:



Chrome

Brushed Nickel

Oil Rubbed  
Bronze

Matte Black

Brushed Bronze

# SHOWER DOORS

## Basco Infinity Semi-Frameless 1/4-inch Glass Sliding Shower Door



Model number: 4500

The Infinity glass shower door proves that less is more. Its semi-frameless bypass glass panels make the shower space appear open. The bypass shower door is distinguished by their curved design elements in the header and towel bars. Quarter-inch thick glass features polished edges and provides an open feeling to your shower space.

- Standard width: 5'
- Standard height: 70" for a fiberglass shower & 76" for the tile shower.
- Bypass Panels: Both panels will slide in the enclosure.
- Contemporary rounded header
- Dual through-the-glass towel bars allow for a towel bar in the interior of the shower and the exterior.

### Glass Options:



Clear

Obscure

### Finish Options:



Chrome

Brushed Nickel

Oil Rubbed  
Bronze

Matte Black

Brushed Bronze

# SHOWER DOORS

## Basco Rotolo Semi-Frameless 1/4-inch Glass Sliding Shower Door



Model number: 5500

The Rotolo bypass rolling door is a semi-frameless shower door that offers the perfect combination of contemporary looks and functionality with an exposed roller bypass design. The quarter-inch glass gives a sleek opening experience with a through-the-glass knob on one panel and a complimentary towel bar on the other.

- Standard widths: 4' & 5'
- Standard height: 76"
- Bypass Panels: Both panels will slide in the enclosure.
- Includes one through-the-glass exterior towel bar for the exterior glass panel and one through-the-glass pull knob for the interior glass panel.
- Clear Glass

Finish Options:



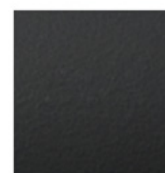
Chrome



Brushed Nickel



Oil Rubbed  
Bronze



Matte Black



# SHOWER DOORS

## Euroglide Series Frameless 3/8" Glass Sliding Shower Door



\*Only available with a tile shower.

Clean lines and architectural design are the hallmarks of our frameless sliding-glass enclosure. A favorite of homeowners seeking a minimalist aesthetic.

- Standard widths: 4' & 5'
- Standard height: 80"
- One fixed panel, one sliding glass panel.
- Exceptionally smooth rollers with single rod assembly.
- Four roller configuration is standard.
- 8" ladder handle for easy opening and closing.
- Clear Glass

Finish Options:



Polished Stainless



Matte Black



Brushed Stainless

# SHOWER DOORS

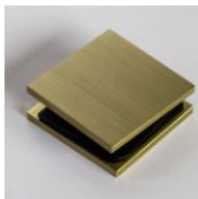
## **Eurolux Semi-Frameless 1/4-inch Glass Swing Door with C-Pull Handle and 3/8" Fixed Panel**



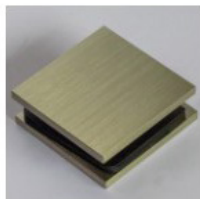
A sleek, semi-frameless swing collection offering the ultimate solution for an all-glass, seamless door with a luxury look and feel.

- Standard widths: 3', 4' & 5'
- Available in 6' width with support bracket. \*See picture below\*
- Standard height: 70"
- Headerless design won't obstruct tile work.
- Sweep to prevent leaking.
- Optional accessories include a single-sided or double-sided towel bar.
- Clear Glass

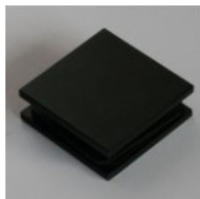
Finish Options:



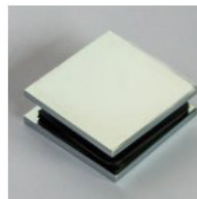
Brushed Bronze



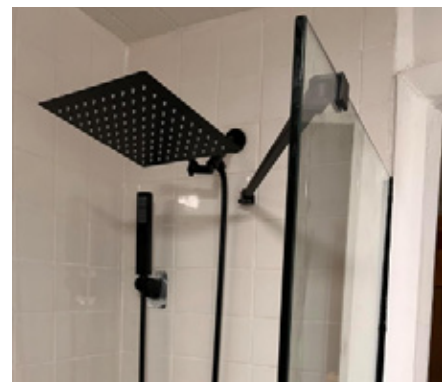
Brushed Nickel



Matte Black



Polished Chrome



# SHOWER DOORS

## Frameless 3/8" Heavy Glass Pivot Door with C-Pull Handle



A frameless swing door offering an unimpeded view of your tile shower. The seamless door design makes any shower feel like a high-end spa experience. Standard widths: 3', 4' & 5'. Available in 6' width.

- Standard height: 72"
- The door swings in and out.
- Sweep to prevent leaking.
- Optional accessories include a single-sided or double-sided towel bar.
- Clear Glass

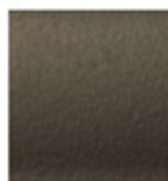
Finish Options:



Chrome



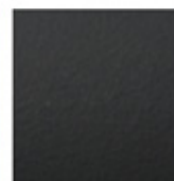
Brushed Nickel



Oil Rubbed  
Bronze



Brushed Bronze



Matte Black

# SHOWER DOORS

## Optional Shower Door and Panel Configurations with Tile Bench Seats



Semi-frameless pivot shower door with notched panel for tile bench seat. (WI-35)



Semi-frameless sliding shower door with bench seat inside 3' wall. (WI-38)



Frameless Glass Panel, no door. (HK-36)



# SHOWER DOORS

## Optional Towel Bars on Fixed Glass Panel

Sizes: 18" or 24"

Double or Single Sided

Colors: Chrome, Brushed Nickel, or Black/Bronze



# SHOWER DOORS

## Glass Protection

Glass Protection is an ultra-protective factory coating that bonds to the glass creating a high performing repellent.

Advantages:

- Low Maintenance
- Requires less cleaning than untreated glass.
- Minimizes mildew, soap scum, and hard water build up.
- 10 year limited lifetime warranty on the protective coating.

\* Recommended periodic squeegee use and maintenance cleaner for best result