

# CONTENTS

---

## Exterior Lighting

Abbott Exterior Collection	2
Barlowe Exterior Collection	3
Brookside Exterior Collection	4
Chatsworth Exterior Collection	5
Contemporary Cylinder	6
District Exterior Collection	7
The Gibbes Street Exterior Package	8
The Squire Exterior Package	9
The Union Square Exterior Package	10

## Interior Lighting

Astra Collection	11
Brandywine Collection	12
Briarwood Collection	13
Cherish Collection	14
Conestee Collection	15
Debut Collection	16
Drum Shade Collection	17
Elara Collection	18
Elevate Collection	19
Equinox Collection	21
Fontayne Collection	22
Galloway Collection	23
Gulliver Collection	24
Landree Collection	26
Lassiter Collection	27
Leap Collection	28
Lowery Collection	29
Orrizo Collection	31
Parkhurst Collection	32
Replay Collection	33
Riley Collection	34
Saffert Collection	35
Spicewood Collection	36
Turnbury Collection	37



# CONTENTS

---

## **Pendants**

Atwell Pendant	39
Briarwood Pendant	39
Chronicle Pendant	40
Clarion Pendant	40
Chastain Pendant	40
Conestee Pendant	41
Delayne Pendant	41
Double Glass Pendant	41
Elevate Pendant	41
Era Pendant	43
Leap Pendant	43
Gulliver Pendant	43
Hinton Pendant	44
Parkhurst Pendant	46
Saffert Pendant	46
Singleton Pendant	46
Staunton Pendant	48
Turnbury Pendant	48

## **Bath & Vanity**

Adley	50
Calhoun	50
Cowan	51
Elevate	51
Hinton	52
Leap	52
Replay	52

## **Miscellaneous** 54

## **Ceiling Fans** 59

## **Included Lighting** 64



# EXTERIOR LIGHTING: ABBOTT EXTERIOR COLLECTION

## FRONT EXTERIOR ENTRANCE

**P560114-103** Antique Pewter  
**P560114-020** Antique Bronze  
8-1/4" W., 16-1/4" ht.  
Extends 10-3/4". H/CTR 12-1/2".  
One medium base lamp,  
100w max.



P560114-103



P560113-020

## SIDE / REAR EXTERIOR ENTRANCE

**P560113-020** Antique Bronze  
**P560113-103** Antique Pewter  
6-1/4" W., 12-1/4" ht.  
Extends 8-1/4". H/CTR 9-3/8".  
One medium base lamp,  
100w max.

## OPTIONAL POST LIGHT

**P540011-103** Antique Pewter  
**P540011-020** Antique Bronze  
8-1/4" W., 18-1/2" ht.  
Extends 8-1/4".  
One medium base lamp,  
100w max.



P540011-103





# BARLOWE EXTERIOR COLLECTION

## FRONT EXTERIOR

### ENTRANCE

**P560157-135** Stainless Steel  
**P560157-020** Antique Bronze  
7-1/2" W., 16" ht.  
Extends 8-1/2". H/CTR 3-1/2".  
One medium base lamp,  
100w max.



P560157-135



P560156-020

## SIDE / REAR EXTERIOR

### ENTRANCE

**P560156-020** Antique Bronze  
**P560156-135** Stainless Steel  
6-1/2" W., 13" ht.  
Extends 7-1/2". H/CTR 2-3/8".  
One medium base lamp,  
100w max.

## OPTIONAL POST LIGHT

**P540068-135** Stainless Steel  
**P540068-020** Antique Bronze  
9" sq., 20" ht.  
One medium base lamp,  
100w max.



P540068-135



# BROOKSIDE EXTERIOR COLLECTION

## FRONT EXTERIOR ENTRANCE

**P5722-71** Gilded Iron

**P5722-81** Antique Nickel

**P5722-14** Cognac

10" W., 10-3/4" ht.

Extends 11-9/16". H/CTR 6-1/2".

One medium base lamp,  
75w max.



P5722-71



P5721-81

## SIDE / REAR EXTERIOR ENTRANCE

**P5721-81** Antique Nickel

**P5721-71** Gilded Iron

**P5721-14** Cognac

8-1/8" W., 10" ht.

Extends 9-7/8". H/CTR 5-3/4".

One medium base lamp,  
60w max.



P5721-14

## SIDE / REAR EXTERIOR ENTRANCE

**P5721-14** Cognac

**P5721-81** Antique Nickel

**P5721-71** Gilded Iron

8-1/8" W., 10" ht.

Extends 9-7/8". H/CTR 5-3/4".

One medium base lamp,  
60w max.



Mountain View Lot 121

# CHATSWORTH EXTERIOR COLLECTION

## FRONT EXTERIOR ENTRANCE

**P560183-031** Textured Black  
9" L., 10" Depth, 22" ht.  
H/CTR 18-7/8".  
Two candelabra base lamps,  
each 60w max.



P560183-031



P560182-031

## SIDE / REAR EXTERIOR ENTRANCE

**P560182-031** Textured Black  
7-1/2" L., 8-1/2" Depth, 14-1/4" ht.  
H/CTR 11-3/4".  
One medium base lamp,  
100w max.

## OPTIONAL POST LIGHT

**P540067-031** Textured Black  
9" L., 9" sq., 23-1/2" ht.  
Two candelabra base lamps,  
each 60w max.



P540067-031



*P560183-031 Outdoor*



# CONTEMPORARY CYLINDER

**P560293-031-30** Black  
6" L., 8-15/16"  
Extends, 18" ht.  
Two LED lamps,  
each 64w max.



P560293-031-30

**P560291-031-30** Black  
5" L., 7-15/16"  
Extends, 14" ht.  
Two LED lamps,  
each 37.2w max.



P560291-031-30



*Featuring Cylinder Outdoor*



# DISTRICT EXTERIOR COLLECTION

## FRONT EXTERIOR ENTRANCE

**P5623-20** Antique Bronze

**P5623-82** Metallic Gray

**P5623-31** Textured Black

12" W., 10-1/2" ht.

Extends 13-1/4". H/CTR 5".

One medium base lamp,

100w max.



P5623-20



P5623-82



P5623-31

## SIDE / REAR EXTERIOR ENTRANCE

**P5622-20** Antique Bronze

**P5622-31** Textured Black

8" W., 8-1/4" ht.

Extends 10-1/4". H/CTR 4-1/8".

One medium base lamp,

100w max.



P5622-20



P5622-31



*Willow Creek Lot 8*

# THE GIBBES STREET EXTERIOR PACKAGE

## FRONT EXTERIOR ENTRANCE

**P560022-031** Textured Black  
**P560022-020** Antique Bronze  
 7" W., 21-3/4" ht.  
 Extends 8-3/4". H/CTR 8-3/8".  
 Two candelabra base lamps,  
 each 60w max.

## SIDE / REAR EXTERIOR ENTRANCE

**P560021-020** Antique Bronze  
**P560021-031** Textured Black  
 5-1/2" W., 15-1/8" ht.  
 Extends 7". H/CTR 5-7/8".  
 One medium base lamp,  
 100w max.

Gibbes Street Collection in Antique Bronze finish with clear glass



P560022-031



P560021-020

## OPTIONAL POST LIGHT

**P540004-020** Antique Bronze  
**P540004-031** Textured Black  
 9-1/2" dia., 26-7/8" ht.  
 Three candelabra base lamps,  
 each 60w max.



P540004-020



Home Towne Lot 98

# THE SQUIRE EXTERIOR PACKAGE

## FRONT EXTERIOR ENTRANCE

**P560037-031** Matte Black  
**P560037-020** Antique Bronze  
8" W., 19-1/4" ht.  
Extends 8-3/4". H/CTR 6-3/4".  
Two candelabra base lamps,  
each 60w max.

Squire Collection is available in Antique Bronze finish with Vintage brass accents and Black finish with Stainless Steel accents



P560037-031



P560036-020

## SIDE / REAR EXTERIOR ENTRANCE

**P560036-020** Antique Bronze  
**P560036-031** Matte Black  
6" W., 14-3/4" ht.  
Extends 7-3/8". H/CTR 6-3/8".  
One medium base lamp,  
100w max.

## OPTIONAL POST LIGHT

**P540012-031** Matte Black  
**P540012-020** Antique Bronze  
9-7/8" dia., 22-5/8" ht.  
Three candelabra base lamps,  
each 60w max.



P540012-031





# THE UNION SQUARE EXTERIOR PACKAGE

## FRONT EXTERIOR ENTRANCE

**P560005-135** Stainless Steel  
7-7/8" W., 19-3/8" ht.  
Extends 6-1/2". H/CTR 7-3/4".  
One medium base lamp,  
100w max.

## SIDE / REAR EXTERIOR ENTRANCE

**P560004-135** Stainless Steel  
6-1/2" W., 15-7/8" ht.  
Extends 5-1/2". H/CTR 6-1/4".  
One medium base lamp,  
100w max.

## LAMP POST

**P560005-135** Stainless Steel  
7-7/8" W., 19-3/8" ht.  
Extends 6-1/2". H/CTR 7-3/4".  
One medium base lamp,  
100w max.

Union Square Collection is available in Stainless Steel finish with clear water



P560005-135



P560004-135



P540046-135

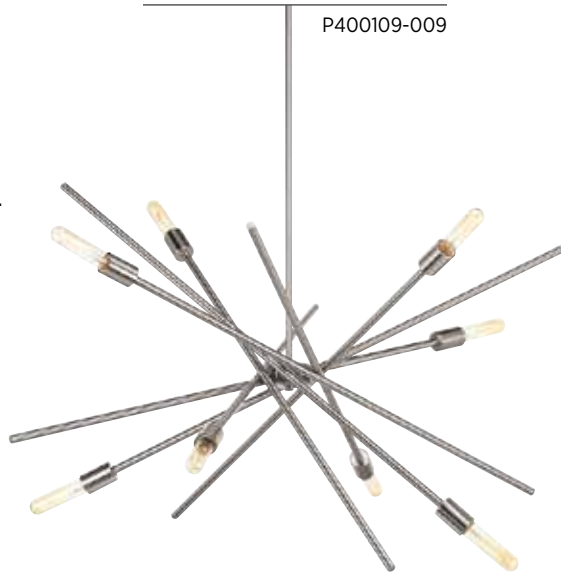


*Willow Creek Lot 10*

# INTERIOR LIGHTING: ASTRA COLLECTION

## EIGHT LIGHT CHANDELIER

**P400109-009** Brushed Nickel  
**P400109-012** Satin Brass  
**P400109-020** Antique Bronze  
**P400109-31M** Matte Black  
 42-3/8" L., 42-3/8" dia., 19-5/8" ht., Overall ht. w/chain And Stem 77", wire 15'.  
 Eight medium base lamps, each 60w max.



## SIX LIGHT CHANDELIER

**P400108-012** Satin Brass  
**P400108-009** Brushed Nickel  
**P400108-020** Antique Bronze  
**P400108-31M** Matte Black  
 22-9/165" L., 22-9/165" dia., 10-1/2" ht., Overall ht. w/chain Or Stem 72", wire 15'.  
 Six medium base lamps, each 60w max.



## THREE LIGHT FLUSH MOUNT

**P350225-020** Antique Bronze  
**P350225-009** Brushed Nickel  
**P350225-012** Satin Brass  
**P350225-31M** Matte Black  
 18" L., 18" dia., 5-1/8" ht.  
 Three medium base lamps, each 60w max.



**P350225-020** Antique Bronze  
**P350225-31M** Matte Black  
**P350225-009** Brushed Nickel  
**P350225-012** Satin Brass  
 18" L., 18" dia., 5-1/8" ht.  
 Three medium base lamps, each 60w max.



P400109-020 Chandelier

# BRANDYWINE COLLECTION

**P500069-134** Silver Ridge  
**P500069-020** Antique Bronze  
 28" dia., 31-7/8" ht.,  
 Overall ht. w/chain 107",  
 wire 15'.  
 Six candelabra base lamps,  
 each 60w max.

**P500287-020** Antique Bronze  
**P500287-134** Silver Ridge  
 22" L., 22" dia., 26" ht.,  
 Overall ht. w/chain 101",  
 wire 15'.  
 Five B1 lamps,  
 each 60w max.



**P500068-020** Antique Bronze  
**P500068-134** Silver Ridge  
 16" dia., 19-3/4" ht.,  
 Overall ht. w/chain 95",  
 wire 10'.  
 Three candelabra base lamps,  
 each 60w max.





# BRIARWOOD COLLECTION

**P400048-020** Antique Bronze  
**P400048-143** Graphite  
**P400048-031** Textured Black  
**P400048-141** Galvanized  
 10" L., 38" W., 9" ht.,  
 Overall ht. w/stem 75",  
 wire 15'.  
 Five medium base lamps,  
 each 100w max.



**P500178-143** Graphite  
**P500178-020** Antique Bronze  
**P500178-031** Textured Black  
**P500178-141** Galvanized  
 15-1/2" W., 20-1/8" ht.,  
 Overall ht. w/chain 86-1/2",  
 wire 15'.  
 Four medium base lamps,  
 each 60w max.



**P400047-143** Graphite  
**P400047-020** Antique Bronze  
**P400047-031** Textured Black  
**P400047-141** Galvanized  
 20" sq., 12" ht.,  
 Overall ht. w/stem 88",  
 wire 15'.  
 Four medium base lamps,  
 each 100w max.



**P500041-020** Antique Bronze  
**P500041-143** Graphite  
**P500041-031** Textured Black  
**P500041-141** Galvanized  
 10" W., 9" ht.,  
 Overall ht. w/stem 78",  
 wire 10'.  
 One medium base lamp,  
 100w max.



**P350039-020** Antique Bronze  
**P350039-143** Graphite  
**P350039-031** Textured Black  
**P350039-141** Galvanized  
 12" sq., 6" ht.  
 Two medium base lamps,  
 each 60w max.



P350039-020



# CHERISH COLLECTION

**P4618-09** Brushed Nickel  
 24" dia., 22-3/8" ht.,  
 Overall ht. w/chain 97",  
 wire 15'.  
 Six candelabra base lamps,  
 each 60w max.



**P4618-20** Antique Bronze  
 24" dia., 22-3/8" ht.,  
 Overall ht. w/chain 97",  
 wire 15'.  
 Six candelabra base lamps,  
 each 60w max.



*P4618-09 Chandelier*

# CONESTEE COLLECTION

**P500094-143** Graphite  
**P500094-141** Galvanized  
Finish  
28" dia., 30-3/4" ht.,  
Overall ht. w/chain 106",  
wire 15'.  
Six medium base lamps,  
each 60w max.



P500094-143

**P500093-141** Galvanized  
Finish  
**P500093-143** Graphite  
21-1/4" dia., 24" ht.,  
Overall ht. w/chain 99",  
wire 15'.  
Three medium base lamps,  
each 60w max.



P500093-141

**P500092-143** Graphite  
**P500092-141** Galvanized  
Finish  
12" dia., 14" ht.,  
Overall ht. w/chain 89",  
wire 10'.  
One medium base lamp,  
60w max.



P500092-143



*Willow Creek Lot 10*



# DEBUT COLLECTION

**P400016-009** Brushed Nickel  
**P400016-143** Graphite  
 36" dia., 34-1/2" ht.,  
 Overall ht. w/chain 109-1/2",  
 wire 15'.  
 Nine medium base lamps,  
 each 60w max.



P400016-009

**P400015-143** Graphite  
**P400015-009** Brushed Nickel  
 28" dia., 27-1/2" ht.,  
 Overall ht. w/chain 102-1/2",  
 wire 15'.  
 Six medium base lamps,  
 each 60w max.



P400015-143

**P350036-009** Brushed Nickel  
**P350036-143** Graphite  
 19-7/8" dia., 15" ht.,  
 Overall ht. w/chain 52",  
 wire 10'.  
 Three medium base lamps,  
 each 60w max.



P350036-009



Cortland Park Lot 428

# DRUM SHADE COLLECTION

**P4217-20** Antique Bronze  
21-5/8" dia., 21-1/8" ht.,  
Overall ht. w/chain 66-1/8",  
wire 10'.  
Five candelabra base lamps,  
each 60w max.



P4217-20

**P4217-09** Brushed Nickel  
21-5/8" dia., 21-1/8" ht.,  
Overall ht. w/chain 66-1/8",  
wire 10'.  
Five candelabra base lamps,  
each 60w max.



P4217-09

**P4217-109** Brushed Bronze  
21-5/8" dia., 21-1/8" ht.,  
Overall ht. w/chain 66-1/8",  
wire 10'.  
Five candelabra base lamps,  
each 60w max.



P4217-109

**P400193-031** Matte Black  
21-5/8" L., 21-5/8"  
dia., 21-1/8" ht.,  
Overall ht. w/chain 65-1/2",  
wire 10'.  
Five candelabra base lamps,  
each 60w max.



P400193-031



Hawk Valley Lot 133

# ELARA COLLECTION

## SIX LIGHT CHANDELIER

**P400294-009** Brushed Nickel

**P400294-31M** Matte Black

**P400294-163** Vintage Brass

30" L., 30" dia., 10-3/8" ht.,  
Overall ht. w/stem 65", wire 10'.

Six candelabra base lamps,  
each 60w max.



P400294-009



P400293-31M

## FOUR LIGHT CHANDELIER

**P400293-31M** Matte Black

**P400293-009** Brushed Nickel

**P400293-163** Vintage Brass

22-7/8" L., 22-7/8" dia., 10-3/8" ht.,  
Overall ht. w/stem 65", wire 10'.

Four candelabra base lamps,  
each 60w max.



P500363-163

## FOUR LIGHT FOYER

**P500363-163** Vintage Brass

**P500363-009** Brushed Nickel

**P500363-31M** Matte Black

15" L., 15" dia., 31-3/8" ht.,

Overall ht. w/stem 88-1/2", wire 10'.

Four candelabra base lamps,  
each 60w max.



Featuring Elara Collection



# ELEVATE COLLECTION

**P400022-031** Matte Black  
**P400022-015** Polished Chrome  
Chrome  
**P400022-109** Brushed Bronze  
27-3/8" W., 23" ht.,  
Overall ht. w/chain 89",  
wire 15'.  
Five medium base lamps,  
each 100w max.



**P400021-109** Brushed Bronze  
**P400021-015** Polished Chrome  
**P400021-031** Matte Black  
21-3/4" dia., 23" ht.,  
Overall ht. w/stem 89",  
wire 15'.  
Three medium base lamps,  
each 100w max.



P350040-031

**P350040-015** Polished Chrome  
**P350040-031** Matte Black  
**P350040-109** Brushed Bronze  
11-3/4" dia., 9-7/8" ht.  
Three medium base lamps,  
each 75w max.



Madison Court Lot 123





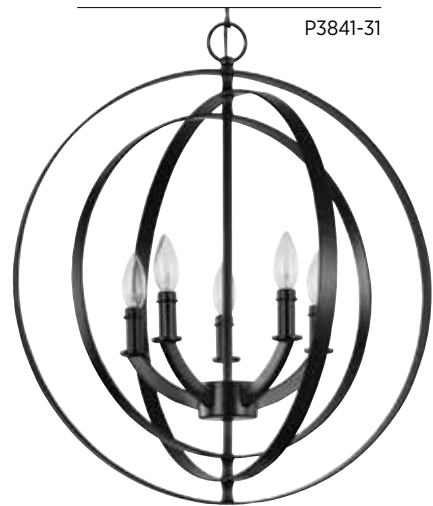
*Wrights Landing Lot 4*

# EQUINOX COLLECTION

**P3889-104** Polished Nickel  
**P3889-31** Matte Black  
**P3889-126** Burnished Silver  
**P3889-20** Antique Bronze  
27-3/4" dia., 30" ht.,  
Overall ht. w/chain 153",  
wire 15'.  
Six candelabra base lamps,  
each 60w max.



**P3841-31** Matte Black  
**P3841-126** Burnished Silver  
**P3841-104** Polished Nickel  
**P3841-20** Antique Bronze  
22" L., 22" dia., 24-3/8" ht.,  
Overall ht. w/chain 99-1/2", wire 15'.  
Five candelabra base lamps,  
each 60w max.



**P3827-31** Matte Black  
**P3827-104** Polished Nickel  
**P3827-20** Antique Bronze  
**P3827-126** Burnished Silver  
16" dia., 18-3/8" ht.,  
Overall ht. w/chain 94",  
wire 15'.  
Four candelabra base lamps,  
each 60w max.



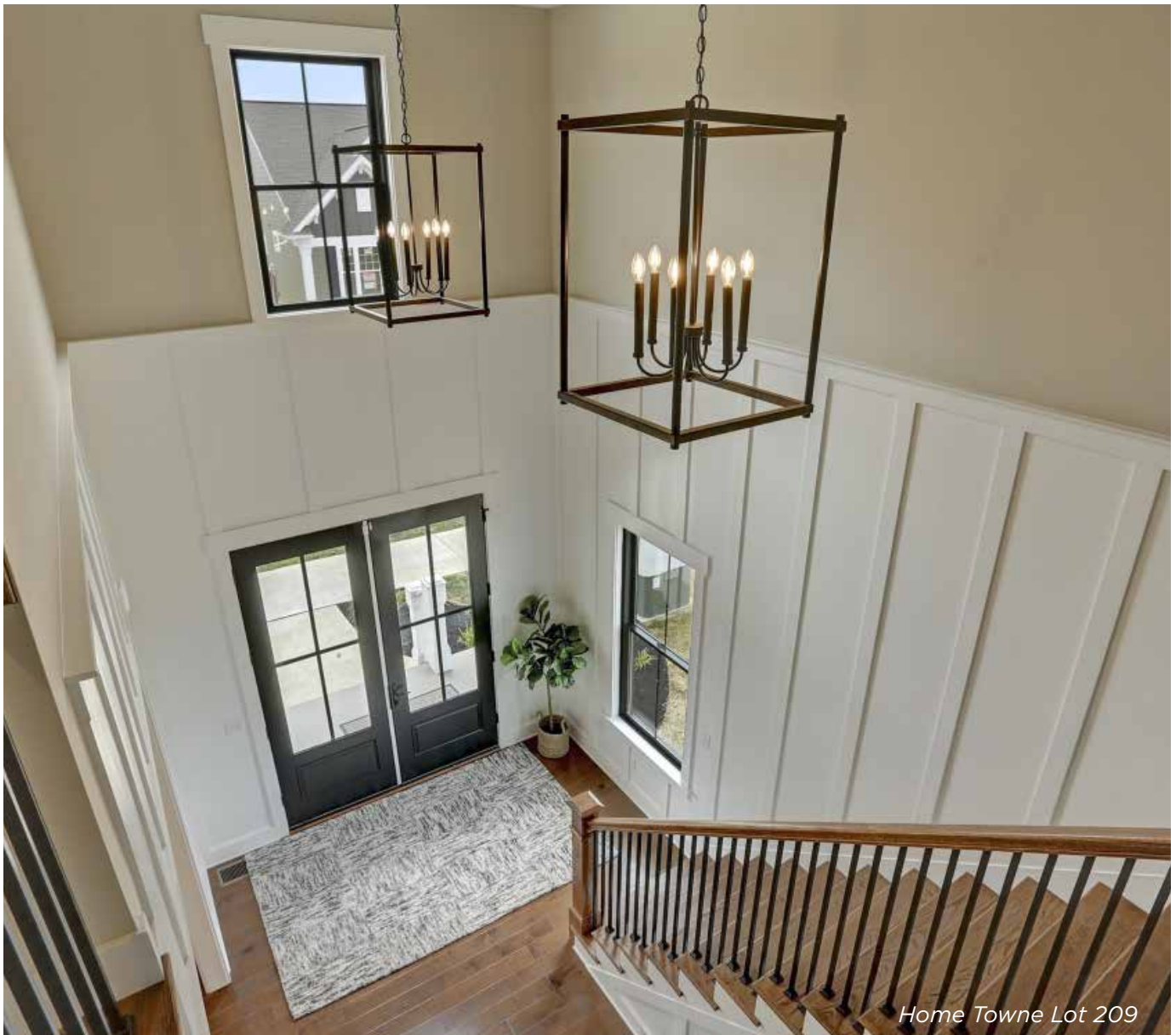
**P5142-126** Burnished Silver  
**P5142-20** Antique Bronze  
10-1/8" dia., 11-3/4" ht.,  
Overall ht. w/chain 87-1/4",  
wire 15'.  
Three candelabra base lamps,  
each 60w max.



# FONTAYNE COLLECTION

**P500088-020** Antique Bronze  
**P500088-009** Brushed Nickel  
14" sq., 25" ht.,  
Overall ht. w/chain 99",  
wire 15'.  
Four candelabra base lamps,  
each 60w max.

P500088-020

*Home Towne Lot 209*

# GALLOWAY COLLECTION

## FIVE LIGHT CHANDELIER

**P400301-31M** Matte Black  
**P400301-009** Brushed Nickel  
 28" L., 28" dia., 19-1/4" ht.,  
 Overall ht. w/chain 94", wire 10'.  
 Five candelabra base lamps,  
 each 60w max.



P400301-31M

## SIX LIGHT CHANDELIER

**P400302-009** Brushed Nickel  
**P400302-31M** Matte Black  
 30" L., 30" dia., 28-1/4" ht.,  
 Overall ht. w/chain 103", wire 15'.  
 Six candelabra base lamps,  
 each 60w max.



P400302-009

## FOUR LIGHT FOYER

**P500377-31M** Matte Black  
**P500377-009** Brushed Nickel  
 14-1/4" L., 14-1/4" dia., 18-3/8" ht.,  
 Overall ht. w/chain 94", wire 10'.  
 Four candelabra base lamps,  
 each 60w max.



P500377-31M

## FOUR LIGHT FOYER

**P500378-009** Brushed Nickel  
**P500378-31M** Matte Black  
 24" L., 24" dia., 30-7/8" ht.,  
 Overall ht. w/chain 106-1/2",  
 wire 15'.  
 Four candelabra base lamps,  
 each 60w max.



P500378-009

## TWO LIGHT FLUSH MOUNT

**P350224-31M** Matte Black  
**P350224-009** Brushed Nickel  
 15" L., 15" dia., 5-1/2" ht.  
 Two medium base lamps,  
 each 60w max.



P350224-31M



*P500378-31M Chandelier*



# GULLIVER COLLECTION

**P400097-141** Galvanized Finish

**P400097-143** Graphite  
38-1/2" W., 17" ht.,  
Overall ht. w/  
chain 91-1/2", wire 15'.  
Extends 10-1/2".  
Four medium base lamps,  
each 75w max.



P400097-141

**P500090-143** Graphite  
**P500090-141** Galvanized Finish

27-3/4" dia., 22-3/4" ht.,  
Overall ht. w/chain 93-1/2",  
wire 10'.  
Five medium base lamps,  
each 75w max.



P500090-143

**P500023-143** Graphite  
**P500023-141** Galvanized Finish

21-5/8" dia., 18-1/4" ht.,  
Overall ht. w/chain 93-1/2",  
wire 10'.  
Four medium base lamps,  
each 75w max.



P500023-143

**P500022-141** Galvanized Finish

**P500022-143** Graphite  
8-1/2" dia., 10" ht.,  
Overall ht. w/chain 85",  
wire 10'.  
One medium base lamp,  
75w max.



P500022-141

**P350049-141** Galvanized Finish

**P350049-143** Graphite  
17" dia., 13-1/2" ht.,  
Overall ht. w/chain 52-1/2",  
wire 10'.  
Three medium base lamps,  
each 75w max.



P350049-141



P350169-143

**P350169-143** Graphite

**P350169-141** Galvanized Finish

14-7/8" dia., 10-1/2" ht.,  
Overall ht. w/chain 52-1/2",  
wire 10'.  
One medium base lamp,  
75w max.



Willow Creek Lot 6

# GULLIVER COLLECTION

**P400159-143** Graphite  
**P400159-141** Galvanized Finish  
35-1/4" dia., 40-1/2" ht.,  
Overall ht. w/chain 163-1/2",  
wire 15'.  
Nine candelabra base lamps,  
each 60w max.



**P400158-141** Galvanized Finish  
**P400158-143** Graphite  
26" dia., 30" ht.,  
Overall ht. w/chain 105-1/2",  
wire 15'.  
Five candelabra base lamps,  
each 60w max.



**P500157-143** Graphite  
**P500157-141** Galvanized Finish  
17-1/8" dia., 26-1/4" ht.,  
Overall ht. w/chain 102-1/2",  
wire 15'.  
Four candelabra base lamps,  
each 60w max.



**P350117-143** Graphite  
**P350117-141** Galvanized Finish  
15-1/4" dia., 12-5/8" ht.,  
Overall ht. w/chain 53",  
wire 10'.  
Four candelabra base lamps,  
each 60w max.



# LANDREE COLLECTION

**P500177-134** Silver Ridge  
**P500177-031** Matte Black  
 23" L., 23" dia., 33-1/2" ht.,  
 Overall ht. w/chain And  
 Stem 102", wire 15'.  
 Eight candelabra base lamps,  
 each 60w max.



**P400178-031** Matte Black  
**P400178-134** Silver Ridge  
 23" dia., 16" ht.,  
 Overall ht. w/chain 81",  
 wire 15'.  
 Five candelabra base lamps,  
 each 60w max.



**P400177-134** Silver Ridge  
**P400177-031** Matte Black  
 18-1/8" L., 18-1/8" dia., 12" ht.,  
 Overall ht. w/chain And Stem 77",  
 wire 15'.  
 Three candelabra base lamps,  
 each 60w max.



**P350132-031** Matte Black  
**P350132-134** Silver Ridge  
 16" dia., 6-5/8" ht.  
 Three medium base lamps,  
 each 60w max.



# LASSITER COLLECTION

**P400198-009** Brushed Nickel  
**P400198-031** Matte Black  
32" dia., 29" ht.,  
Overall ht. w/chain 152",  
wire 15'.  
Nine medium base lamps,  
each 60w max.

**P400197-031** Matte Black  
**P400197-009** Brushed Nickel  
26" dia., 26" ht.,  
Overall ht. w/chain 101",  
wire 15'.  
Five medium base lamps,  
each 60w max.



P400198-009



P400197-031

**P500209-009** Brushed Nickel  
**P500209-031** Matte Black  
16-5/8" dia., 26" ht.,  
Overall ht. w/chain 101",  
wire 15'.  
Three medium base lamps,  
each 60w max.

**P350149-031** Matte Black  
**P350149-009** Brushed Nickel  
13" dia., 10-1/2" ht.  
Three medium base lamps,  
each 60w max.



P500209-009



P350149-031



P500209-009 Pendant



# LEAP COLLECTION

**P400044-009** Brushed Nickel  
26-3/8" dia., 37" ht.,  
Overall ht. w/chain 160",  
wire 15'.  
Nine medium base lamps,  
each 100w max.



**P400043-009** Brushed Nickel  
25" dia., 30" ht.,  
Overall ht. w/chain 105",  
wire 15'.  
Five medium base lamps,  
each 100w max.



**P400042-009** Brushed Nickel  
21" dia., 27-5/8" ht.,  
Overall ht. w/chain 102",  
wire 15'.  
Three medium base lamps,  
each 100w max.



**P350060-009** Brushed Nickel  
14" dia., 8-7/8" ht.,  
Overall ht. w/chain 46-1/2",  
wire 10'.  
Two medium base lamps,  
each 100w max.



P350060-009



# LOWERY COLLECTION

**P500331-031** Textured Black  
**P500331-31M** Matte Black  
31-3/4" L., 31-3/4" dia., 23-3/4" ht.,  
Overall ht. w/chain And Stem 90",  
wire 15'.  
Six medium base lamps,  
each 60w max.



P500331-031



P500331-31M

**P500330-031** Textured Black  
**P500330-31M** Matte Black  
26" L., 26" dia., 20" ht.,  
Overall ht. w/chain And Stem 86",  
wire 15'.  
Five medium base lamps,  
each 60w max.



P500330-031



P500330-31M

**P350203-031** Textured Black  
**P350203-31M** Matte Black  
19" L., 19" dia., 15-3/8" ht.,  
Overall ht. w/chain And Stem  
78-1/2", wire 10'.  
Three medium base lamps,  
each 60w max.



P350203-031



P350203-31M



Featuring: Lowery Collection

# ORRIZO COLLECTIONS

**P400176-031** Black  
24" dia., 19-3/8" ht.,  
Overall ht. w/chain 84",  
wire 15'. H/CTR 84".  
Six candelabra base lamps,  
each 60w max.

**Orrizo** Chandelier  
Black with Golden metal rods

P400176-031



*P400176-031 Chandelier*



# PARKHURST COLLECTION

**P500214-009** Brushed Nickel  
**P500214-031** Black  
**P500214-109** Brushed Bronze  
 14-3/8" sq., 24-3/8" ht.,  
 Overall ht. w/chain 99-1/2",  
 wire 10'.  
 Four candelabra base lamps,  
 each 60w max.



**P500213-009** Brushed Nickel  
**P500213-031** Black  
**P500213-109** Brushed Bronze  
 10-7/8" sq., 19-3/4" ht.,  
 Overall ht. w/chain 94",  
 wire 10'.  
 Three candelabra base lamps,  
 each 60w max.



**P500371-009** Brushed Nickel  
**P500371-31M** Matte Black  
**P500371-109** Brushed Bronze  
 20" L., 20" sq., 36" ht.,  
 Overall ht. w/chain 108", wire 15'.  
 Eight B1 lamps,  
 each 60w max.

**P400295-009** Brushed Nickel  
**P400295-31M** Matte Black  
**P400295-109** Brushed Bronze  
 21" L., 21" dia., 12-1/4" ht.,  
 Overall ht. w/chain Or Stem 78",  
 wire 10'.  
 Three A19 lamps,  
 each 60w max.



**P400296-009** Brushed Nickel  
**P400296-31M** Matte Black  
**P400296-109** Brushed Bronze  
 25-1/4" L., 25-1/4" dia., 12-1/2" ht.,  
 Overall ht. w/chain Or Stem  
 78-1/2", wire 10'.  
 Five B1 lamps,  
 each 60w max.

**P400297-009** Brushed Nickel  
**P400297-31M** Matte Black  
**P400297-109** Brushed Bronze  
 30" L., 30" dia., 14" ht.,  
 Overall ht. w/chain Or Stem 80",  
 wire 10'.  
 Six B1 lamps,  
 each 60w max.

**P400300-31M** Matte Black  
**P400300-009** Brushed Nickel  
**P400300-109** Brushed Bronze  
 42" L., 13" Depth, 15-1/8" ht.,  
 Overall ht. w/chain Or Stem  
 89-1/2", wire 10'.  
 Six candelabra base lamps,  
 each 60w max.



# REPLAY COLLECTION

**P4726-09** Brushed Nickel  
**P4726-31** Black  
**P4726-104** Polished Nickel  
25-1/2" dia., 28" ht.,  
Overall ht. w/chain 104",  
wire 15'.  
Nine medium base lamps,  
each 100w max.



P4726-09

**P4319-31** Black  
**P4319-09** Brushed Nickel  
**P4319-104** Polished Nickel  
21" dia., 20-1/8" ht.,  
Overall ht. w/stem 95",  
wire 15'.  
Five medium base lamps,  
each 100w max.



P4319-31

**P4318-104** Polished Nickel  
**P4318-09** Brushed Nickel  
**P4318-31** Black  
17" dia., 20-1/8" ht.,  
Overall ht. w/stem 95",  
wire 15'.  
Three medium base lamps,  
each 100w max.



P4318-104

**P3424-31** Black  
**P3424-09** Brushed Nickel  
**P3424-104** Polished Nickel  
14-3/4" dia., 10-1/8" ht.,  
Overall ht. w/chain 49-1/2",  
wire 10'.  
Two medium base lamps,  
each 100w max.



P3424-31



# RILEY COLLECTION

**P400210-009** Brushed Nickel  
**P400210-031** Matte Black  
 30" dia., 25-1/8" ht.,  
 Overall ht. w/chain 91",  
 wire 15'.  
 Nine candelabra base lamps,  
 each 60w max.

**P400209-031** Matte Black  
**P400209-009** Brushed Nickel  
 24" dia., 19-3/4" ht.,  
 Overall ht. w/chain 85-1/2",  
 wire 15'.  
 Five candelabra base lamps,  
 each 60w max.



**P500243-009** Brushed Nickel  
**P500243-031** Matte Black  
 21" dia., 11" ht.,  
 Overall ht. w/chain 77",  
 wire 15'.  
 Three candelabra base lamps,  
 each 60w max.



*P400209-031 Chandelier*

# SAFFERT COLLECTION

## THREE LIGHT WHITE LINEN GLASS PENDANT

**P500357-009** Brushed Nickel  
**P500357-31M** Matte Black  
**P500357-163** Vintage Brass  
22" L., 22" dia., 30" ht.,  
Overall ht. w/chain 105", wire 10'.  
Three medium base lamps,  
each 60w max.



## THREE LIGHT LINEAR WITH CLEAR GLASS

**P400298-31M** Matte Black  
**P400298-009** Brushed Nickel  
**P400298-163** Vintage Brass  
40" L., 7-9/16" Depth, 11-7/8" ht.,  
Overall ht. w/stem 67-1/2", wire 15'.  
Three medium base lamps,  
each 60w max.



## FOUR LIGHT WITH CLEAR GLASS

**P400299-163** Vintage Brass  
**P400299-009** Brushed Nickel  
**P400299-31M** Matte Black  
29-3/8" L., 29-3/8" dia., 22-1/2" ht.,  
Overall ht. w/stem 78-1/2", wire 15'.  
Four medium base lamps,  
each 60w max.



*P500357-163 Pendants*



# SPICEWOOD COLLECTIONS

**P4767-71** Gilded Iron  
30" dia., 32-1/2" ht.,  
Overall ht. w/chain 107-1/2",  
wire 15'.  
Six candelabra base lamps,  
each 60w max.

P4767-71

*Sweetbriar Lot 167*

# TURNBURY COLLECTION

**P4763-141** Galvanized Finish  
36" dia., 39" ht.,  
Overall ht. w/chain 162",  
wire 15'.  
Eight candelabra base lamps,  
each 60w max.



**P4761-141** Galvanized Finish  
26" dia., 28-3/4" ht.,  
Overall ht. w/chain 103-1/2",  
wire 15'.  
Six candelabra base lamps,  
each 60w max.



**P4760-141** Galvanized Finish  
16" dia., 18-3/4" ht.,  
Overall ht. w/chain 93-1/2",  
wire 15'.  
Four candelabra base lamps,  
each 60w max.



**P5317-141** Galvanized Finish  
10" dia., 12-1/4" ht.,  
Overall ht. w/chain 87",  
wire 10'.  
One medium base lamp,  
100w max.





*Susquehanna Union Green Lot 2*

# PENDANTS

## ATWELL

**P500311-009** Brushed Nickel  
**P500311-109** Brushed Bronze  
**P500311-031** Matte Black  
 12" dia., 12-1/2" ht.,  
 Overall ht. w/cord 132-1/2",  
 wire 10'.  
 One lamp,  
 60w max.



## ATWELL LUXE

**P500283-009** Brushed Nickel  
**P500283-031** Matte Black  
**P500283-109** Brushed Bronze  
 8-1/4" L., 8-1/4" dia., 13-1/8" ht.,  
 Overall ht. w/stem 70", wire 10'.  
 One G16.5 lamp,  
 60w max.



## BRIARWOOD PENDANTS

**P500041-020** Antique Bronze  
**P500041-143** Graphite  
**P500041-031** Matte Black  
**P500041-141** Galvanized  
 10" W., 9" ht.,  
 Overall ht. w/stem 78",  
 wire 10'.  
 One medium base lamp,  
 100w max.

**Briarwood Pendant**  
 Rich, painted oaky finish paired  
 with an Antique Bronze Finish





# PENDANTS

## CHRONICLE PENDANT

**P5311-20** Antique Bronze  
12" dia., 13" ht.,  
Overall ht. w/stem 79",  
wire 10'.  
One medium base lamp,  
100w max.

**Chronicle** Pendant  
Clear seeded glass with an  
Antique Bronze frame

P5311-20



## CLARION PENDANTS

**P500241-104** Polished Nickel  
**P500241-012** Satin Brass  
**P500241-009** Brushed Nickel  
**P500241-031** Matte Black  
9" dia., 11-3/8" ht.,  
Overall ht. w/stem 67-1/2",  
wire 10'.  
One medium base lamp,  
60w max.

P500241-104



P500241-009



P500241-012



P500241-031



## CHASTAIN PENDANTS

**P500343-185** Bleached Oak  
**P500343-187** Cerused Black Oak  
14" L., 14" dia., 17-1/4" ht.,  
Overall ht. w/stem 83", wire 10'.  
One medium base lamp,  
60w max.

**P500344-185** Bleached Oak  
**P500344-187** Cerused Black Oak  
20-7/8" L., 20-7/8" dia., 25-1/4" ht.,  
Overall ht. w/stem 91-1/2", wire 15'.  
Three medium base lamps,  
each 60w max.

P500343-185



P500343-187



P500344-185



P500344-187



# PENDANTS

**CONESTEE PENDANT**  
**P500092-143** Graphite  
**P500092-141** Galvanized  
 Finish  
 12" dia., 14" ht.,  
 Overall ht. w/chain 89",  
 wire 10'.  
 One medium base lamp,  
 60w max.

**Conestee** Mini-Pendant  
 Graphite with hand-painted  
 weathered gray accents

P500092-143



**Conestee** Mini-Pendant  
 Hand-painted Galvanized finish  
 with antique white accents

P500092-141



**DELAYNE PENDANT**  
**P500359-009** Brushed Nickel  
**P500359-31M** Matte Black  
**P500359-109** Brushed Bronze  
 16-1/8" L., 16-1/8" dia., 21-5/8" ht.,  
 Overall ht. w/chain Or Stem  
 85-1/2", wire 10'.  
 One medium base lamp,  
 100w max.

P500359-009



P500359-31M



P500359-109



**DOUBLE GLASS PENDANT**  
**P500019-015** Polished Chrome  
**P500019-143** Graphite  
 7-3/4" dia., 13-1/2" ht.,  
 Overall ht. w/stem 79-1/2",  
 wire 10'.  
 One medium base lamp,  
 100w max.

**Double** Glass Collection  
 Graphite Finish

P500019-143



**Double** Glass Collection  
 Polished Chrome Finish

P500019-015



**ELEVATE PENDANTS**  
**P500151-015** Polished Chrome  
**P500151-109** Brushed Bronze  
**P500151-031** Matte Black  
 5-1/8" dia., 7" ht.,  
 Overall ht. w/chain 73",  
 wire 10'.  
 One medium base lamp,  
 75w max.

P500151-015



P500151-109



P500151-031





*Madison Court Lot 123*



*Hawk Valley Lot 136*

# PENDANTS

## ERA PENDANT

**P500033-031** Matte Black  
8-3/8" dia., 16-3/4" ht.,  
Overall ht. w/cord 82-1/2",  
wire 10'.  
One A19 lamp,  
75w max.

**Era** Pendant  
Satin Black finish with  
gold leaf accents

P500033-031



## LEAP PENDANT

**P500029-009** Brushed Nickel  
**P500029-020** Antique Bronze  
5" dia., 6-1/2" ht.,  
Overall ht. w/chain And Stem  
72-1/2", wire 10'.  
One medium base lamp,  
100w max.

**Leap** Collection  
Brushed Nickel Finish

P500029-009



**Leap** Collection  
Antique Bronze Finish

P500029-020



## GULLIVER PENDANT

**P500022-141** Galvanized  
Finish  
**P500022-143** Graphite  
8-1/2" dia., 10" ht.,  
Overall ht. w/chain 85",  
wire 10'.  
One medium base lamp,  
75w max.

**Gulliver** Mini- Pendant  
Galvanized finish with hand painted  
antique white accents

P500022-141



**Gulliver** Mini- Pendant  
Graphite finish with hand painted  
to emulated weathered driftwood

P500022-143





# PENDANTS

## HINTON PENDANTS

**P500324-009** Brushed Nickel

**P500324-031** Matte Black

**P500324-104** Polished Nickel

**P500324-163** Vintage Brass

12" dia., 12-1/2" ht.,  
Overall ht. w/chain Or Stem  
78-1/2", wire 10'.

One lamp,  
100w max.



## HINTON PENDANTS

**P500325-009** Brushed Nickel

**P500325-031** Matte Black

**P500325-104** Polished Nickel

**P500325-163** Vintage Brass

12-1/4" dia., 12-3/4" ht.,  
Overall ht. w/chain Or Stem  
78-1/2", wire 10'.

One lamp,  
100w max.





Featuring: Hinton Pendants

# PENDANTS

## PARKHURST PENDANTS

**P500368-009** Brushed Nickel  
**P500368-31M** Matte Black  
**P500368-109** Brushed Bronze  
 17-7/8" L., 17-7/8" dia., 15-1/4" ht.,  
 Overall ht. w/stem 72", wire 10'.  
 Three medium base lamps,  
 each 60w max.



## SAFFERT PENDANTS

**P500357-009** Brushed Nickel  
**P500357-31M** Matte Black  
**P500357-163** Vintage Brass  
 22" L., 22" dia., 30" ht.,  
 Overall ht. w/chain 105", wire 10'.  
 Three medium base lamps,  
 each 60w max.



## SINGLETON PENDANTS

**P500381-009** Brushed Nickel  
**P500381-31M** Matte Black  
**P500381-163** Vintage Brass  
 14" L., 14" dia., 8-1/2" ht.,  
 Overall ht. w/stem 65", wire 10'.  
 One medium base lamp,  
 60w max.





*Susquehanna Union Green Lot 25*



*Cornwall Junction Lot 19*



# PENDANTS

## STAUNTON PENDANTS

**P5333-09** Brushed Nickel

**P5333-20** Antique Bronze

**P5333-143** Graphite

9" dia., 16-1/2" ht.,  
Overall ht. w/cord 124",  
wire 10'.

One medium base lamp,  
75w max.

**Staunton** Collection  
Champagne Glass  
Antique Bronze Finish

P5333-20



**Staunton** Collection

Smoke Glass

Graphite Finish

P5333-143



**Staunton** Collection  
Clear Glass  
Brushed Nickel Finish

P5333-09



## TURNBURY PENDANT

**P5317-141** Galvanized Finish

10" dia., 12-1/4" ht.,

Overall ht. w/chain 87",  
wire 10'.

One medium base lamp,  
100w max.

**Turnbury** Pendant  
Galvanized finish with  
distressed frame

P5317-141





*Danbury Glen Lot 58*



*Madison Court Lot 123*

# BATH VANITY LIGHTS

## ADLEY VANITY LIGHTS

**P300155-009** Brushed Nickel

**P300155-031** Matte Black

**P300155-104** Polished Nickel

**P300155-012** Satin Brass

13-7/8" W., 7-5/8" ht.

Extends 6". H/CTR 5-3/8".

Two A19 lamps,  
each 60w max.



P300155-009



P300155-031

## ADLEY THREE LIGHT VANITY

**P300156-009** Brushed Nickel

**P300156-031** Matte Black

**P300156-104** Polished Nickel

**P300156-012** Satin Brass

23" L., 6" Depth, 7-5/8" ht.

H/CTR 5-3/8".

Three medium base lamps,  
each 60w max.



P300156-104



P300156-012

## CALHOUN VANITY LIGHTS

**P300046-009** Brushed Nickel

**P300046-020** Antique Bronze

**P300046-163** Vintage Brass

13-1/4" W., 8-5/8" ht.

Extends 6-7/8". H/CTR 6-3/8".

Two medium base lamps,  
each 100w max.



P300046-009



P300046-020

## CALHOUN THREE LIGHT VANITY

**P300047-009** Brushed Nickel

**P300047-020** Antique Bronze

**P300047-163** Vintage Brass

21-5/8" L., 6-7/8" Depth, 8-5/8" ht.

H/CTR 6-3/8".

Three medium base lamps,  
each 100w max.



P300047-163

# BATH VANITY LIGHTS

## COWAN TWO LIGHT VANITY

**P300369-009** Brushed Nickel

**P300369-012** Satin Brass

**P300369-31M** Matte Black

13-1/2" L., 5-1/2"

Extends, 8-1/2" ht. H/CTR 6-1/8".

Two medium base lamps,  
each 100w max.



P300369-009



P300369-012

## COWAN THREE LIGHT VANITY

**P300370-009** Brushed Nickel

**P300370-012** Satin Brass

**P300370-31M** Matte Black

23-1/2" L., 7-3/4"

Extends, 8-1/2" ht. H/CTR 6-1/8".

Three medium base lamps,  
each 100w max.



P300370-31M

## ELEVATE VANITY LIGHTS

**P300021-031** Matte Black

**P300021-109** Brushed Bronze

**P300021-015** Polished Chrome

15-3/8" W., 7-1/2" ht.

Extends 6-1/8". H/CTR 5".

Two medium base lamps,  
each 100w max.



P300021-031



P300021-109

## ELEVATE THREE LIGHT VANITY

**P300022-031** Matte Black

**P300022-109** Brushed Bronze

**P300022-015** Polished

Chrome

24-3/4" L., 8" Depth, 7-1/2" ht.

H/CTR 5".

Three medium base lamps,  
each 100w max.



P300022-015



# BATH VANITY LIGHTS

## HINTON VANITY LIGHTS

**P300349-009** Brushed Nickel

**P300349-31M** Matte Black

**P300349-163** Vintage Brass

15-1/2" W., 7-3/4" ht.

Extends 7-1/8". H/CTR 5-1/8".

Two A19 lamps,  
each 60w max.



P300349-009



P300349-31M

## HINTON THREE LIGHT VANITY

**P300350-009** Brushed Nickel

**P300350-31M** Matte Black

**P300350-163** Vintage Brass

24-1/2" L., 7-1/8"

Extends, 7-3/4" ht. H/CTR 5-1/8".

Three medium base lamps,  
each 60w max.



P300350-163

## LEAP VANITY LIGHTS

**P300132-009** Brushed Nickel

**P300132-020** Antique Bronze

13-7/8" W., 8-3/8" ht.

Extends 6-1/8". H/CTR 6".

Two medium base lamps,  
each 100w max.



P300132-009



P300132-020

## LEAP THREE LIGHT VANITY

**P300133-009** Brushed Nickel

**P300133-020** Antique Bronze

22-7/8" L., 6-1/8" Depth, 8-3/8" ht.

Extends 6-1/8". H/CTR 6".

Three medium base lamps,  
each 100w max.

**Replay** Collection available in Brushed Nickel, Black and Polished Nickel

## REPLAY VANITY LIGHTS

**P2158-104** Polished Nickel

**P2158-31** Textured Black

**P2158-20** Antique Bronze

**P2158-09** Brushed Nickel

13" W., 7-7/8" ht.

Extends 6". H/CTR 5-1/4".

Two medium base lamps,  
each 100w max.



P2158-104



P2158-31

## REPLAY THREE LIGHT VANITY

**P2159-104** Polished Nickel

**P2159-31** Textured Black

**P2159-20** Antique Bronze

**P2159-09** Brushed Nickel

22" L., 6" Depth, 7-7/8" ht.

Extends 6". H/CTR 5-1/4".

Three medium base lamps,  
each 100w max.



P2159-20



P2159-09



Madison Court Lot 123



Willow Creek Lot 8

# MISCELLANEOUS

## DISTRICT COLLECTION

**P5622-20** Antique Bronze

**P5622-31** Textured Black  
8" W., 8-1/4" ht.

Extends 10-1/4". H/CTR 4-1/8".

One medium base lamp,  
100w max.



P5622-20



P5622-31

## TRINITY CEILING LIGHT OPTION

**P3476-09** Brushed Nickel

**P3476-20** Antique Bronze  
15" dia., 7-1/2" ht.

Two A19 lamps,  
each 60w max.



P3476-09



P3476-20

## REPLAY CEILING LIGHT OPTIONS

**P3423-09** Brushed Nickel

**P3423-31** Textured Black

**P3423-104** Polished Nickel  
14" dia., 5-3/4" ht.

Two A19 lamps,  
each 60w max.



P3423-09



P3423-31



P3423-104

# MISCELLANEOUS

## INSPIRE CEILING LIGHT OPTION

**P3713-09** Brushed Nickel  
**P3713-20** Antique Bronze  
13" L., 13" dia., 5-1/2" ht.  
Two A19 lamps,  
each 60w max.



P3713-09



P3713-20

## INSPIRE CEILING LIGHT OPTION

**P350130-012** Satin Brass  
13" L., 13" dia., 5-1/2" ht.  
Two medium base lamps,  
each 60w max.



P350130-012

## SINGLETON CEILING LIGHT OPTIONS

**P350227-009** Brushed Nickel  
**P350227-31M** Matte Black  
**P350227-163** Vintage Brass  
**P350130-012** Satin Brass  
14" L., 14" dia., 8-1/2" ht.  
One medium base lamp,  
60w max.



P350227-009



P350227-31M



P350227-163



# MISCELLANEOUS

## DEBUT CLEAR SEEDED

### GLASS SHADE

**P860003-001** Unfinished  
4-1/4" dia., 5-7/8" ht.



P860003-001



P860002-001

## DEBUT FROSTED SEEDED

### GLASS SHADE

**P860002-001** Unfinished  
4-1/4" dia., 5-7/8" ht.

## ELARA COLLECTION CLEAR GLASS ACCESSORY CYLINDRICAL SHADE

**P860061-068** Clear  
3" L., 3" dia., 8-3/4" ht.



P860061-068

## ELARA COLLECTION WHITE LINEN ACCESSORY TAPERED SHADE

**P860060-000** No Finish  
5-1/2" L., 5-1/2" dia., 5-1/2" ht.



P860060-000

## ELARA COLLECTION WHITE LINEN ACCESSORY DRUM SHADE

**P860059-000** No Finish  
5" L., 5" dia., 5" ht.



P860059-000

# MISCELLANEOUS

## HINTON SWING ARM LIGHTS

**P710094-009** Brushed Nickel

**P710094-031** Matte Black

**P710094-163** Vintage Brass

8" W., 14-3/8" ht.

Extends 18-1/4". H/CTR 11-1/4".

One medium base lamp,  
60w max.



P710094-009



P710094-031



P710094-163

## HINTON SWING ARM LIGHTS

**P710095-009** Brushed Nickel

**P710095-031** Matte Black

**P710095-163** Vintage Brass

8-1/4" W., 14-3/8" ht.

Extends 18-3/8". H/CTR 11-1/4".

One medium base lamp,  
60w max.



P710095-009



P710095-031



P710095-163



# CEILING FANS - 52" BUILDER FAN

**FAN**  
**P250080-015** Polished Chrome  
52" L., 52" dia., 12-1/2" ht.



P250080-015 with Rustic Charcoal blades



P250080-015 with Black blades

**FAN**  
**P250080-009** Brushed Nickel  
52" L., 52" dia., 12-1/2" ht.



P250080-009 with Gray Weathered Wood blades



P250080-009 with Silver blades

# CEILING FANS - 52" BUILDER FAN

**FAN**  
**P250080-030** White  
52" L., 52" dia., 12-1/2" ht.



P250080-030 with Antique Wood blades



P250080-030 with White blades

**FAN**  
**P250080-143** Graphite  
52" L., 52" dia., 12-1/2" ht.



P250080-143 with Graphite blades



P250080-143 with Black blades

**FAN**  
**P250080-31M** Matte Black  
52" L., 52" dia., 12-1/2" ht.



P250080-31M with Rustic Charcoal blades



P250080-31M with Black blades



# CEILING FANS - 52" BUILDER FAN & ACCESORIES

## FAN

**P250080-020** Antique Bronze  
52" L., 52" dia., 12-1/2" ht.



P250080-020 with Distress Walnut blades



P250080-020 with Classic Walnut blades

## LIGHT OPTION (INDOOR)

**P2610-09WB** Brushed Nickel  
**P2610-20WB** Antique Bronze  
**P2610-30WB** White  
**P2610-143WB** Graphite  
**P2610-15WB** Polished Chrome  
 15" dia., 6-1/4" ht.  
 Four LED lamps,  
 each 10w max.



P2610-20WB



P2612-01WB  
with -09 finial



P2612-01WB  
with -20 finial

## LIGHT OPTION (INDOOR)

**P2612-01WB** Unfinished  
 12" dia., 7-11/16" ht.  
 Two LED lamps,  
 each 10w max.  
*Includes (-09) Brushed Nickel,  
 (-15) Polished Chrome, (-20)  
 Antique Bronze, (-30) white, and  
 (-143) Graphite finials for use with  
 matching Progress Lighting fans.*



P2612-01WB  
with -15 finial



P2612-01WB  
with -30 finial



P2612-01WB  
with -143 finial

## LIGHT OPTION (INDOOR)

**P2602-09WB** Brushed Nickel  
**P2602-30WB** White  
**P2602-20WB** Antique Bronze  
**P2602-143WB** Graphite  
**P2602-15WB** Polished Chrome  
 10-1/2" dia., 3-13/16" ht.  
 Two A-19 lamps,  
 each 9w max.



P2602-09WB



P2614-01

## REMOTE OPTION

**P2614-01** White  
 2-1/8" W., 4-3/4" ht.  
 Extends 1".

# THE AIRPRO® 52" CEILING FAN

**P250085-009-WB** Brushed Nickel  
52" L., 52" dia., 18-11/16" ht.  
Four LED lamps,  
each 8.5w max.



P250085-009-WB

**P250085-030-WB** White  
52" L., 52" dia., 18-11/16" ht.  
Four LED lamps,  
each 8.5w max.



P250085-030-WB

**P250085-31M-WB** Matte Black  
52" L., 52" dia., 18-11/16" ht.  
Four LED lamps,  
each 8.5w max.



P250085-31M-WB

# THE CLIFTON HEIGHTS 52" FAN

## FAN

**P2531-09** Brushed Nickel  
**P2531-20** Antique Bronze  
 52" dia., 15-3/4" ht.

## LIGHT OPTION (INDOOR)

**P2654-09WB** Brushed Nickel  
**P2654-20WB** Antique Bronze  
 12-1/2" dia., 6-1/4" ht.  
 Two LED lamps,  
 each 10w max.



P2531-09 with  
Cherry blades



P2654-01WB  
with -09 Finial



P2531-09 with  
Natural Cherry  
blades



P2654-01WB  
with -09 Finial



P2531-20 with Medium  
Cherry blades



P2654-01WB  
with -20 Finial



P2531-20 with Classic  
Walnut blades



P2654-01WB  
with -20 Finial

# THE 52" PATIO OUTDOOR CEILING FAN

**P2502-141** Galvanized Finish  
**P2502-30** White  
**P2502-20** Antique Bronze  
**P2502-80** Forged Black  
 52" dia., 12-3/4" ht.

**LIGHT OPTION (OUTDOOR)**  
**P2601-141WB** Galvanized Finish  
**P2601-30WB** White  
**P2601-20WB** Antique Bronze  
**P2601-80WB** Forged Black  
 9-1/4" dia., 7-1/2" ht.  
 One A-19 lamp, 9w max.

**LIGHT OPTION (OUTDOOR)**  
**P2611-30WB** White  
**P2611-20WB** Antique Bronze  
**P2611-80WB** Forged Black  
 10-1/2" dia., 3-13/16" ht.  
 Two A-19 lamps, each 9w max.



P2502-141



P2601-141WB



P2502-30



P2601-30WB



P2611-30WB



P2502-20



P2601-20WB



P2611-20WB

**P5603-31** Textured Black  
 4-7/8" dia., 6-1/4" ht.  
 One A19 lamp, 60w max.



P5603-31



P2502-80



P2601-80WB



P2611-80WB



# INCLUDED INTERIOR PACKAGE

## DINING ROOM

**P4008-09** Brushed Nickel  
21" dia., 16" ht.,  
Overall ht. w/chain 90-1/2",  
wire 10'.  
Five candelabra base lamps,  
each 60w max.



## BREAKFAST

**P5095-09** Brushed Nickel  
18" dia., 9-1/2" ht.,  
Overall ht. w/chain 85",  
wire 15'.  
One medium base lamp,  
150w max.



## 2 STORY FOYER

**P3473-09** Brushed Nickel  
16" dia., 15" ht.,  
Overall ht. w/chain 93",  
wire 15'.  
Two medium base lamps,  
each 100w max.



## 1 STORY FOYER

**P3476-09** Brushed Nickel  
15" dia., 7-1/2" ht.  
Two medium base lamps,  
each 60w max.



## BATH VANITY

**P2707-15** Polished Chrome  
**P2707-09** Brushed Nickel  
**P2707-20** Antique Bronze  
12" L., 6-1/2" Depth, 7-1/2" ht.  
Extends 6-1/2". H/CTR 2-1/2".  
Two medium base lamps,  
each 100w max.



## LAUNDRY ROOM / WALK IN CLOSET

**P3410-30** White  
9-1/2" dia., 5-1/4" ht.  
Two medium base lamps,  
each 60w max.



**LED recessed lighting included where noted.**

# INCLUDED WESTPORT EXTERIOR PACKAGE

## FRONT ENTRANCE

**P5863-31** Textured Black  
9" W., 16" ht.  
Extends 10-3/8". H/CTR 3-1/2".  
One medium base lamp,  
100w max.



P5863-31



P5862-31

## SIDE / REAR ENTRANCE

**P5862-31** Textured Black  
6-7/8" W., 12-3/4" ht.  
Extends 8-3/8". H/CTR 3-1/8".  
One medium base lamp,  
60w max.

## OPTIONAL POST LIGHT

**P5445-31** Textured Black  
9" dia., 16-1/4" ht.  
One medium base lamp,  
100w max.



P5445-31



BB-6440\_7/26/2023

 **PROGRESS  
LIGHTING®**

701 Millennium Boulevard  
Greenville, SC 29607  
progresslighting.com

